

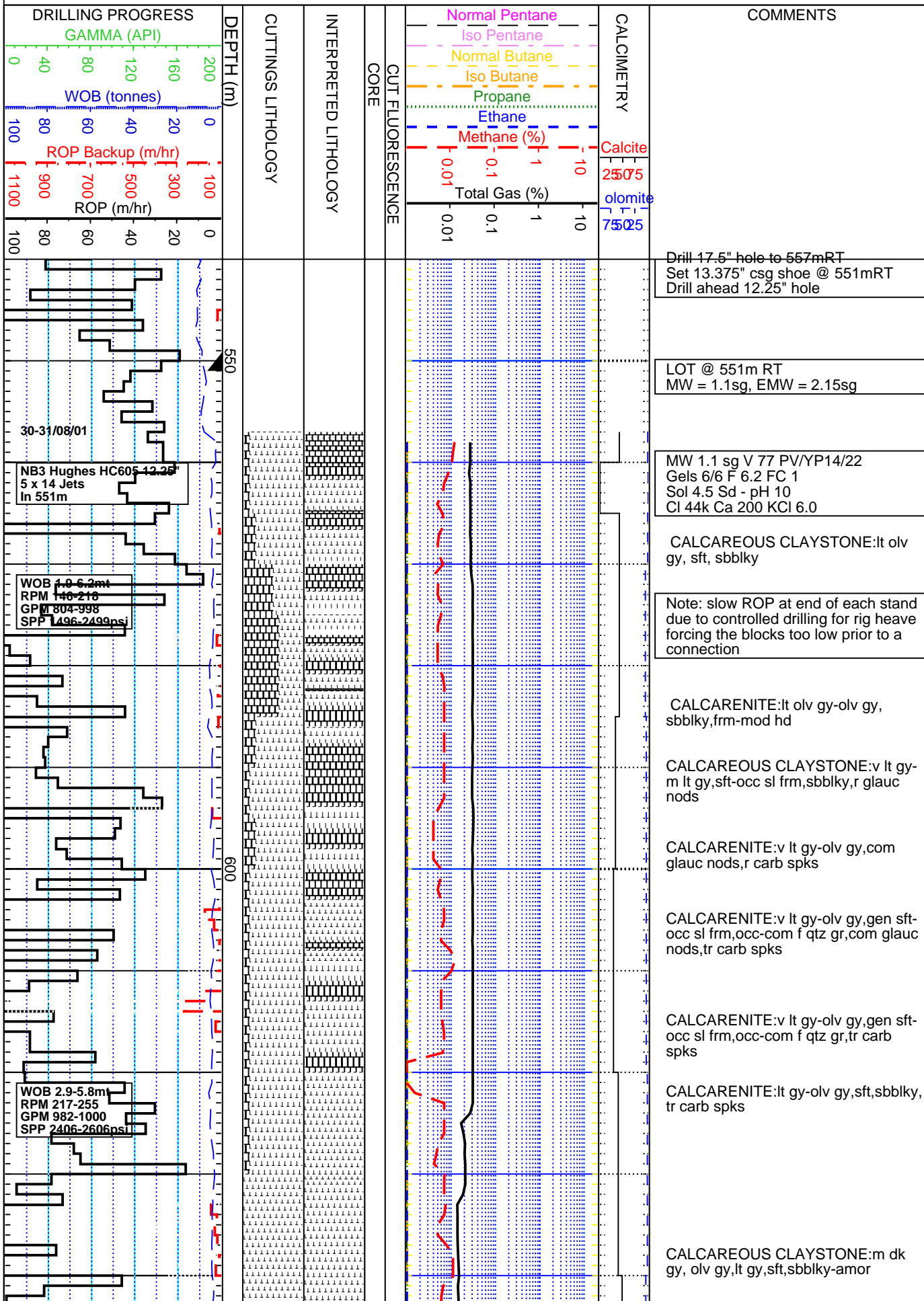


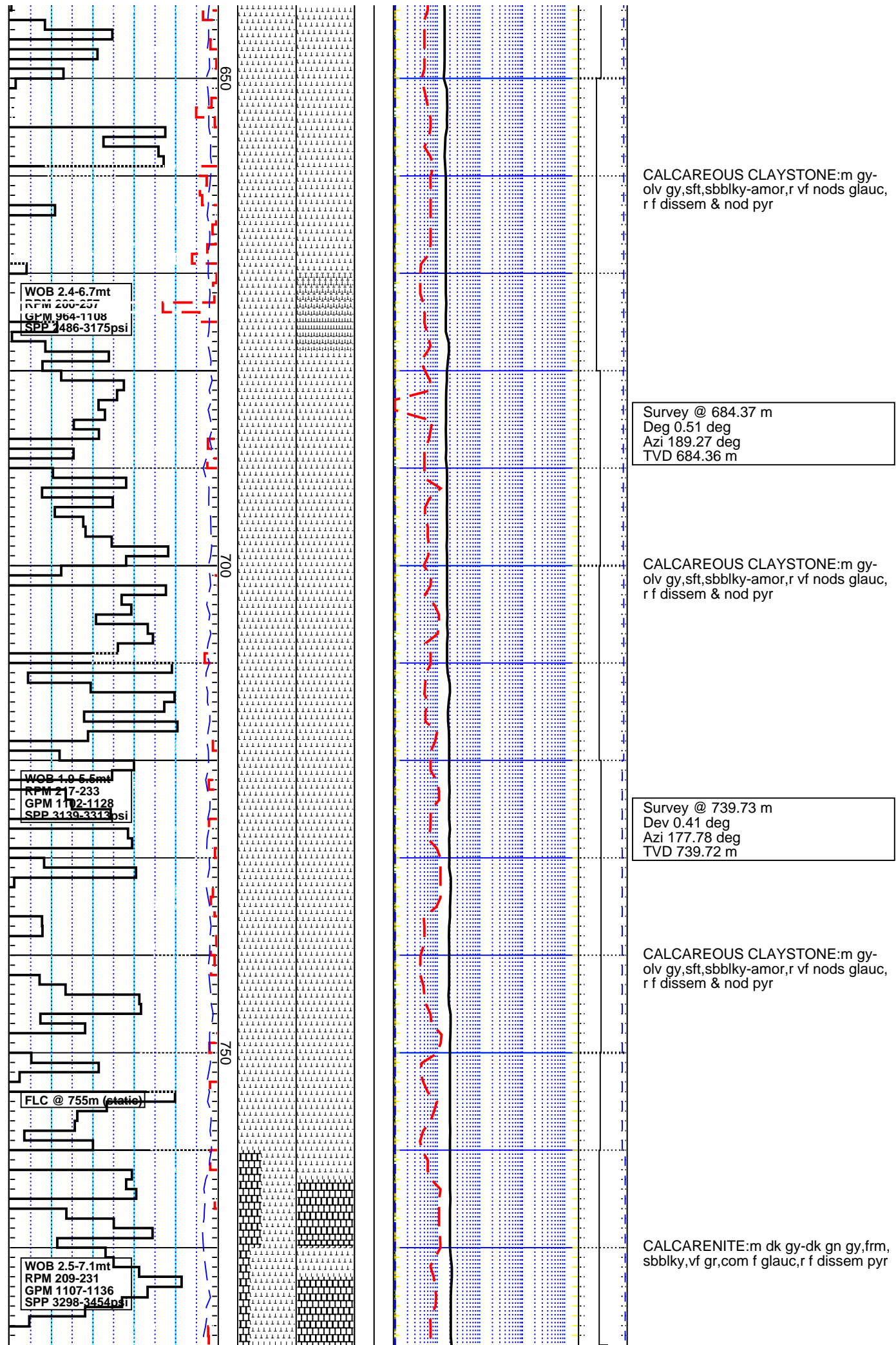
INTEQ

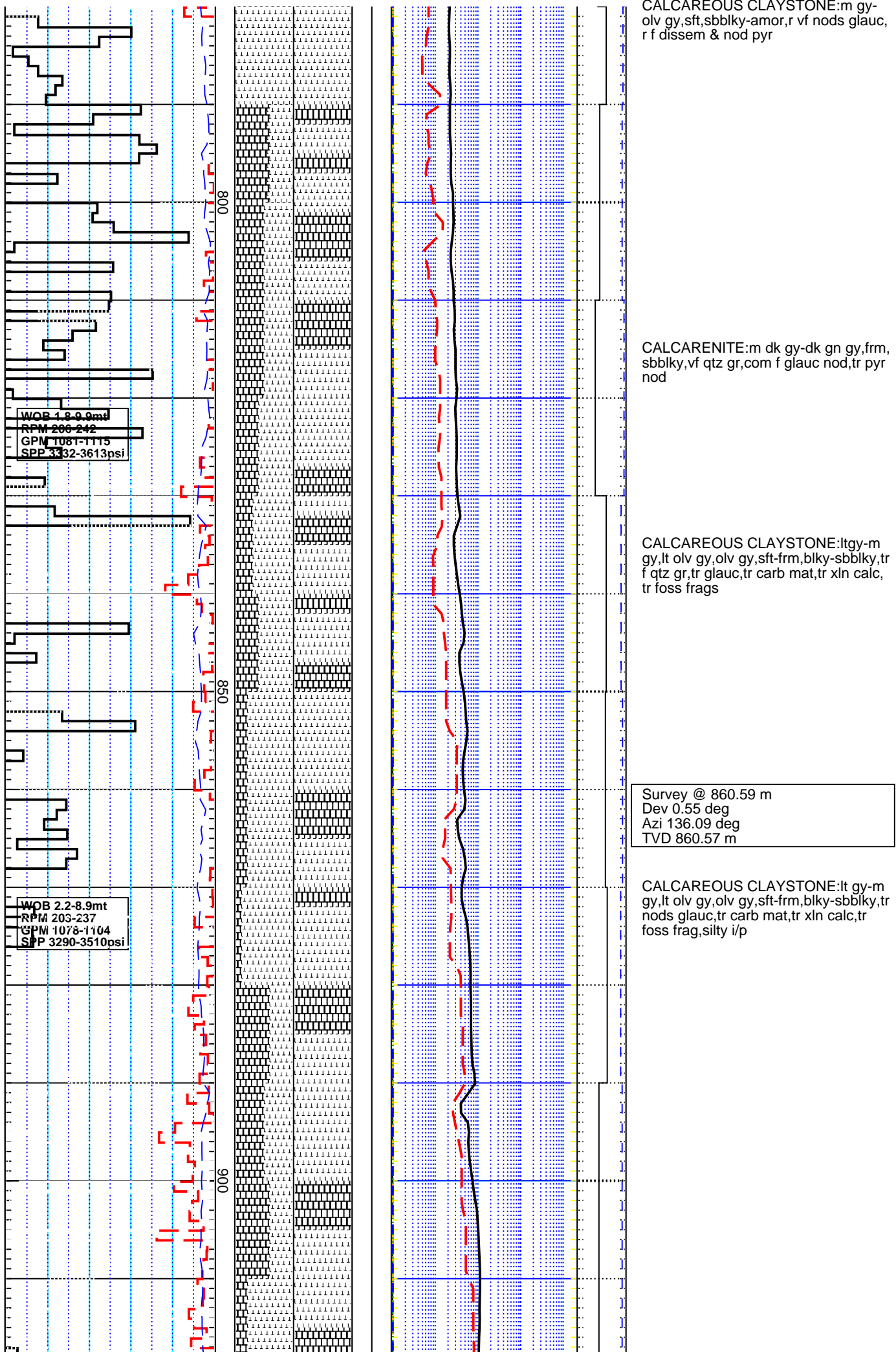
FORMATION EVALUATION LOG

Thylacine-2

SCALE: 1:500.0







WOB 1.37-6.85mt
RPM 214-253
GPM 1081-1104
SPP 3387-3607psi

WOB 4.47-6.91mt
RPM 222-250
GPM 1085-1118
SPP 3308-3527psi

WOB 2.84-7.95mt
RPM 228-246
GPM 1091-1105
SPP 3391-3559psi

950

1000

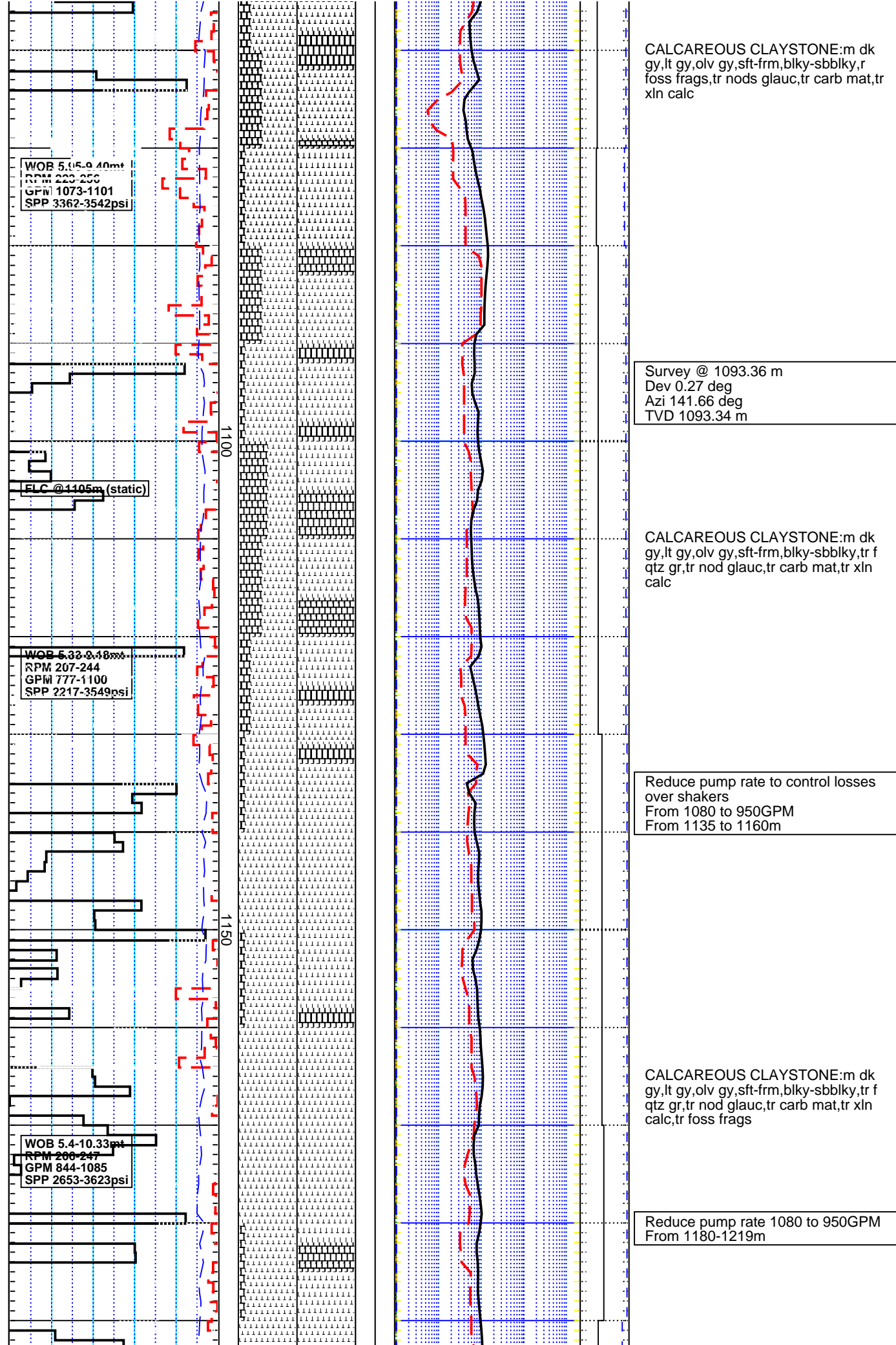
1050

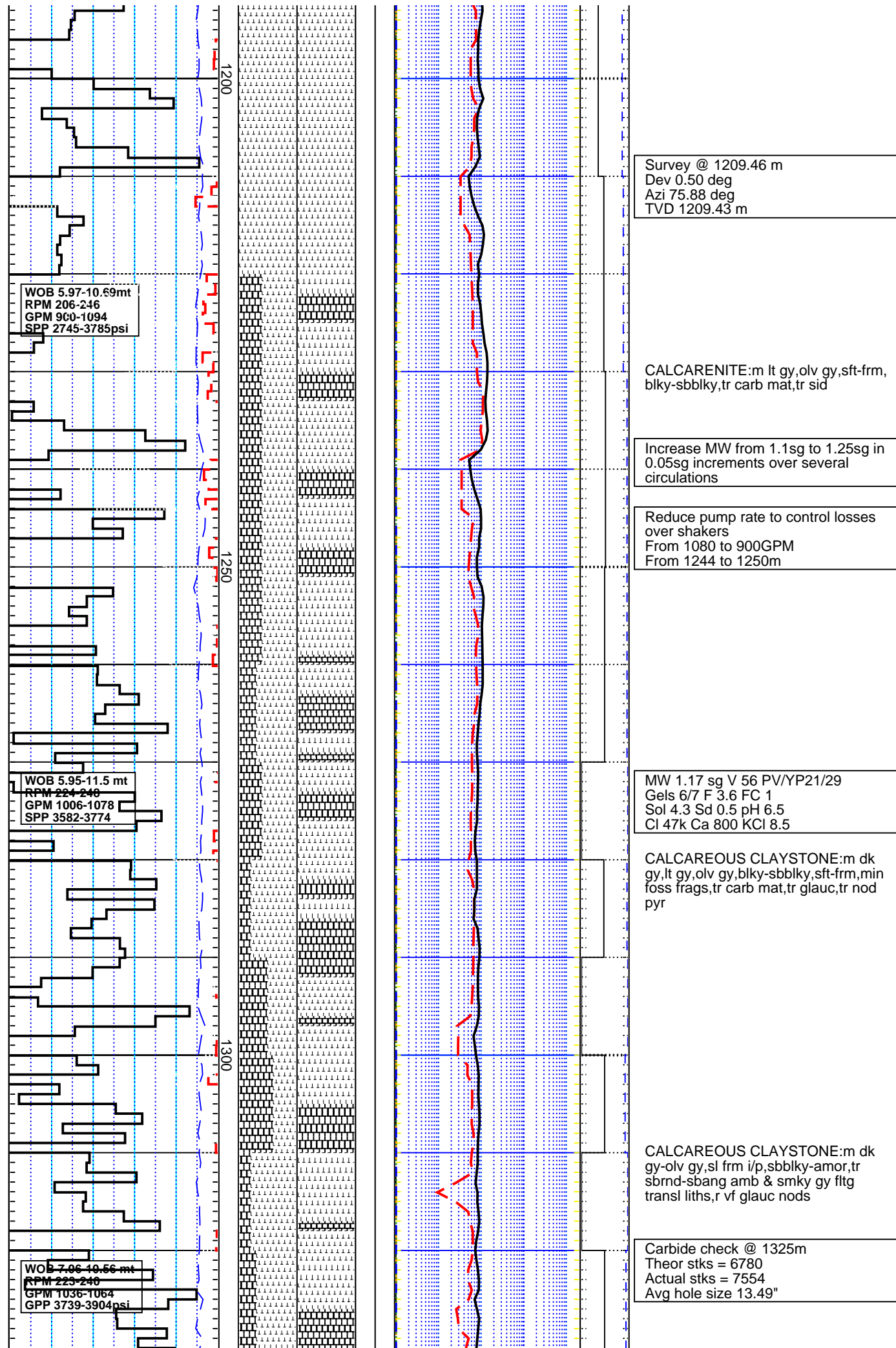
CALCARENITE:m gy-dk gy,frm,blky-sbblky,com f glauc nod,r f dissem pyr, tr carb mat,tr xln calc

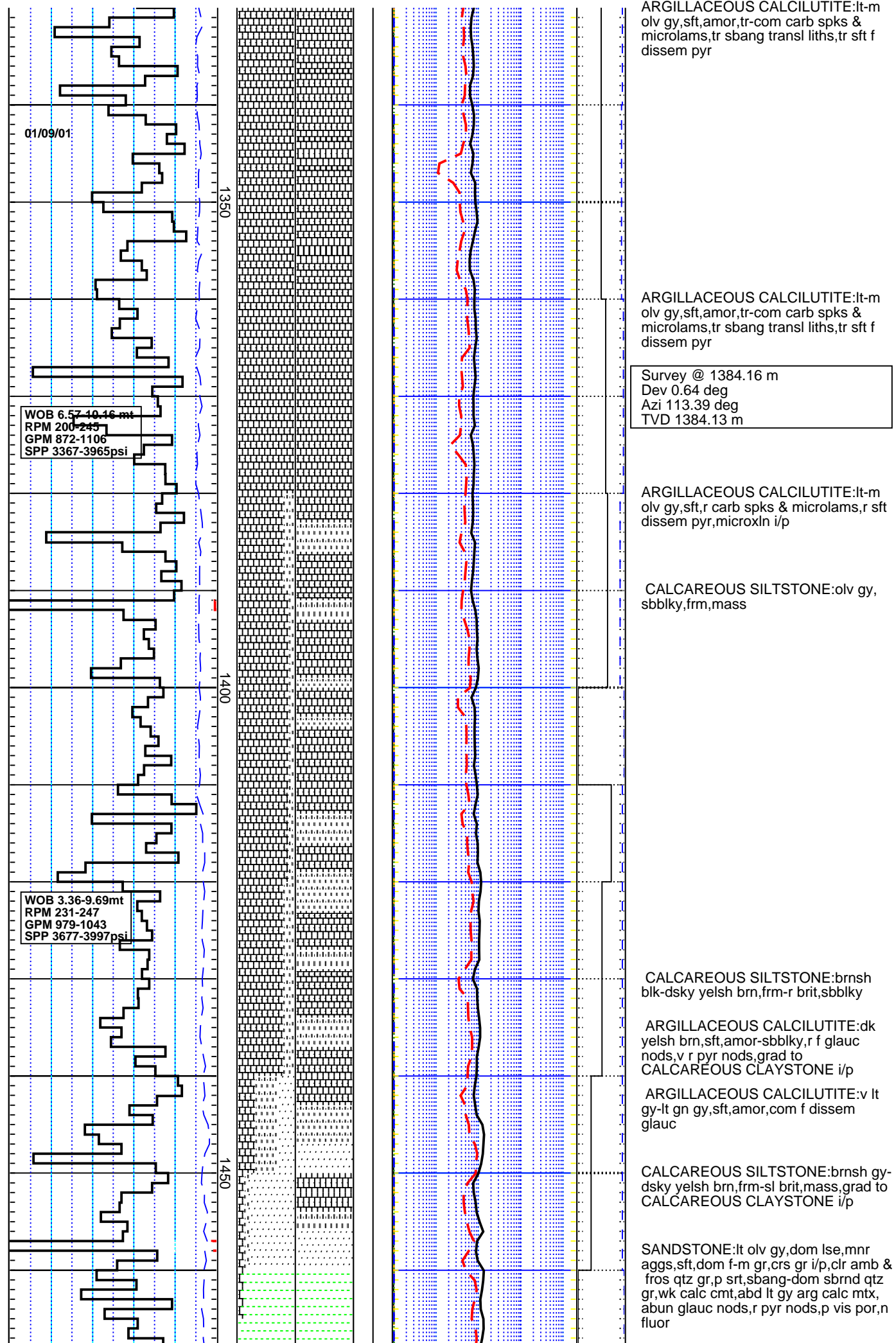
CALCAREOUS CLAYSTONE:ltgy-m gy,lt olv gy,olv gy,sft-frm,blky-sbblky,tr nods glauc,tr carb mat,tr xln calc,tr foss frag,grd to CALCISILTITE i/p

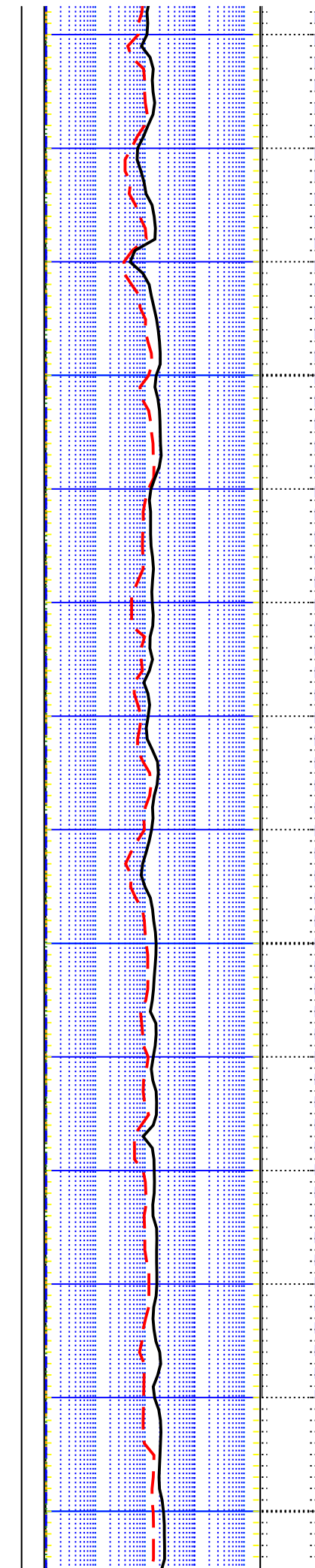
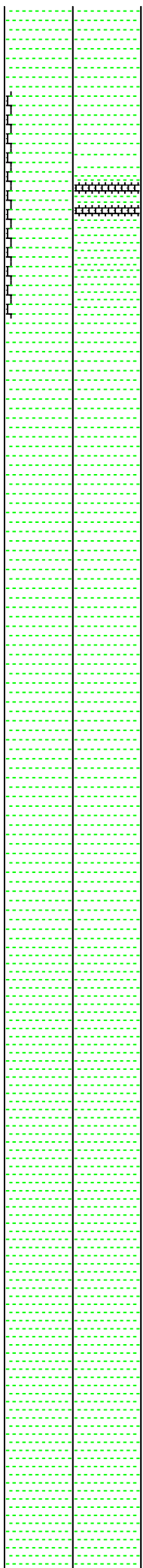
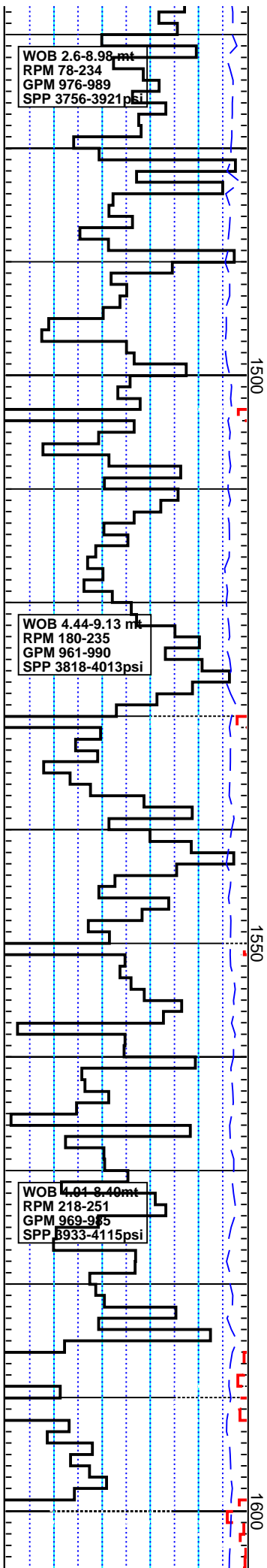
CALCISILTITE: m lt gy-m dk gyolv gy, sft-frm,blky-sbblky,r nods glauc,r carb mat,tr xln calc,tr dissem pyr,tr pyr nod

CALCAREOUS CLAYSTONE:m dk gy,lt gy,olv gy,sft-frm,blky-sbblky,r foss frags,tr nods glauc,tr carb mat,tr xln calc









CLAYSTONE:dsky yelsh brn-brnsh
blk,sft,amor,flocc,non disp,non calc,
com m-dom v crs sbrnd clr & fros fltg
qtz gr,tr vf glauc nods,r crs pyr nods

CLAYSTONE:dsky yelsh brn-brnsh
blk,sft,amor,flocc,non disp,non calc,
com m-dom v crs sbrnd clr & fros fltg
qtz gr,tr vf glauc nods,r crs pyr nods

CLAYSTONE:dsky yelsh brn-brnsh
blk,sft,amor,flocc,non disp,non calc,tr
m-dom v crs sbrnd clr & fros fltg qtz gr,
tr vf glauc nods,r crs pyr nods

Survey @ 1499.15 m
Dev 0.61 deg
Azi 112.19 deg
TVD 1499.11 m

CLAYSTONE:dsky yelsh brn-brnsh
blk,sft,amor,flocc,non disp,non calc,tr
vf glauc nods,r crs pyr nods

CLAYSTONE:dsky yelsh brn-brnsh
blk,sft,amor,flocc,non disp,non calc,
com m-dom

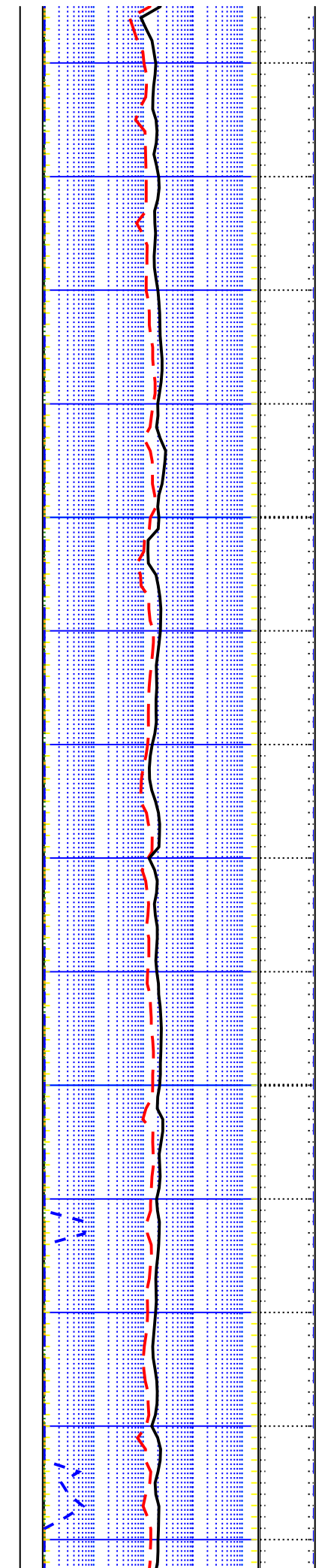
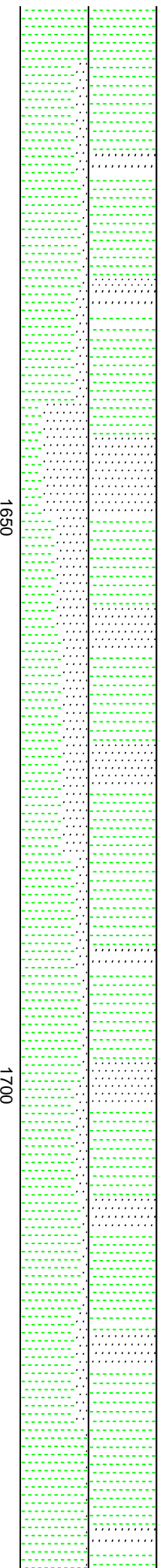
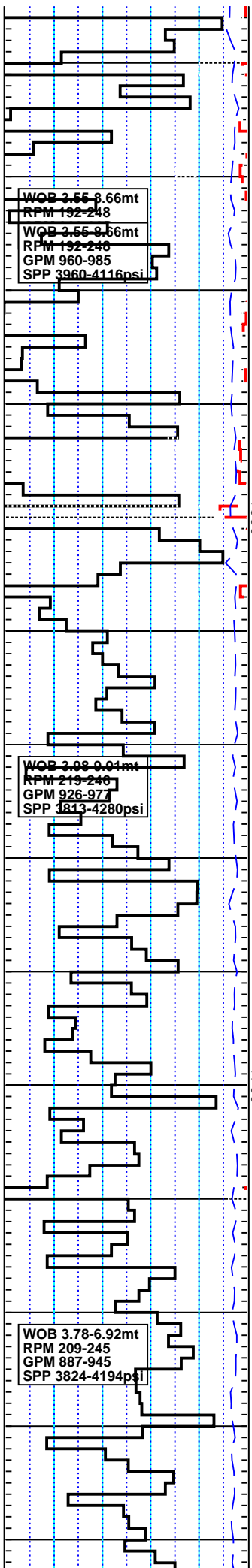
Survey @ 1528.39 m
Dev 0.59 deg
Azi 99.50 deg
TVD 1528.35 m

CLAYSTONE:dom dk olv gy-olv gy,v
sft-r frm,olv gy is calc,dk olv gy is non
calc,com f-crs sbang-dom sbrnd fltg
qtz gr,tr-com pyr nods,com carb spks &
microlams, v r micmic

Survey @ 1557.20 m
Dev 0.63 deg
Azi 94.58 deg
TVD 1557.16 m

CLAYSTONE:dom dk olv gy-olv gy,v
sft-r frm,olv gy is calc,dk olv gy is non
calc,com f-crs sbang-dom sbrnd fltg
qtz gr,tr-com pyr nods,com carb spks &
microlams, v r micmic

CLAYSTONE:dom dk olv gy-olv gy,v
sft-r frm,olv gy is calc,dk olv gy is non
calc,com f-crs sbang-dom sbrnd fltg
qtz gr,tr-com pyr nods,com carb spks &



microlams, v r micmic

SANDSTONE:lt gy-lt brnsh gy,clr,occ
mlky qtz grns,sbang-sbrnd,f-m,lse,fri,
mod wl srt,p cmt,lt gy mtx,tr pyr,tr
glauc,tr carb spks,tr mic mic,p vis por,
no shw

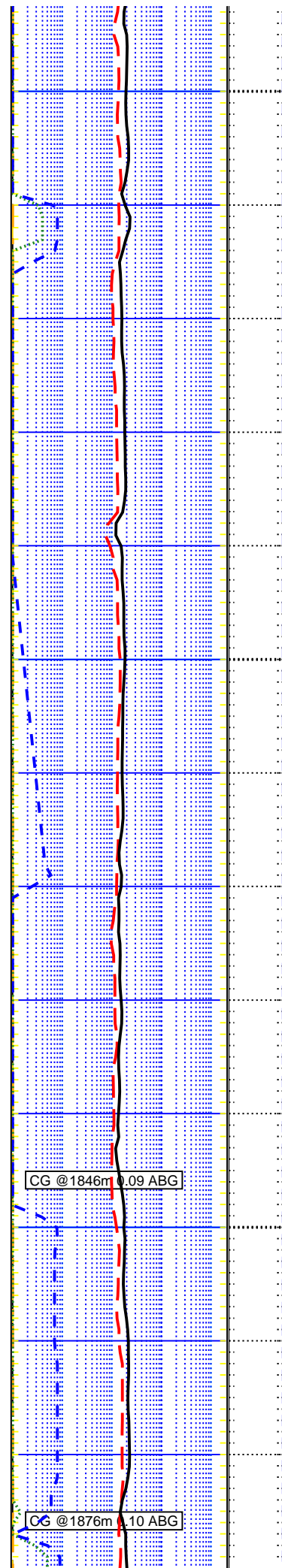
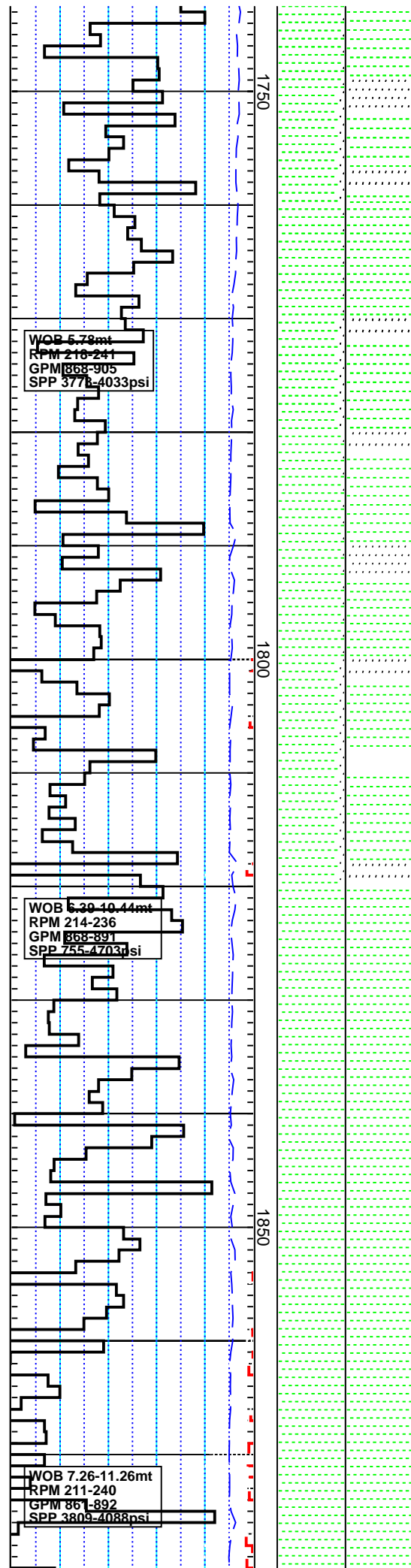
CLAYSTONE:dom m dk gy-dk gy,olv
gy,v sft-sft,amor,non calc,lt gy-m lt gy,
sft-frm,sbblky,calc,com carb spks &
microlams,tr glauc,tr pyr,frags

CLAYSTONE:dom m gy-m dk gy,olv
gy,v sft-sft,amor,non calc,lt gy-m lt gy,
sft-frm,sbblky,calc,com carb spks &
microlams,tr glauc,tr pyr nod

@1702 add Alplex

Survey @ 1702.37 m
Dev 0.89 deg
Azi 105.20 deg
TVD 1702.31 m

SANDSTONE:lt gy-lt brnsh gy,clr,occ
mlky qtz grns,vf-f,sbrnd,lse,fri,mod wl
srt,p cmt,lt gy mtx,tr pyr,tr glauc,
carb spks,tr mic mic,p vis por,no shw



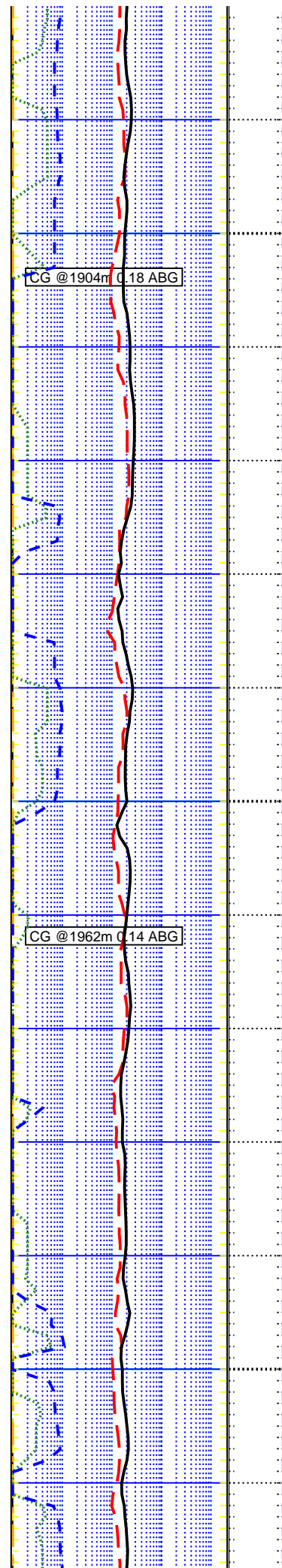
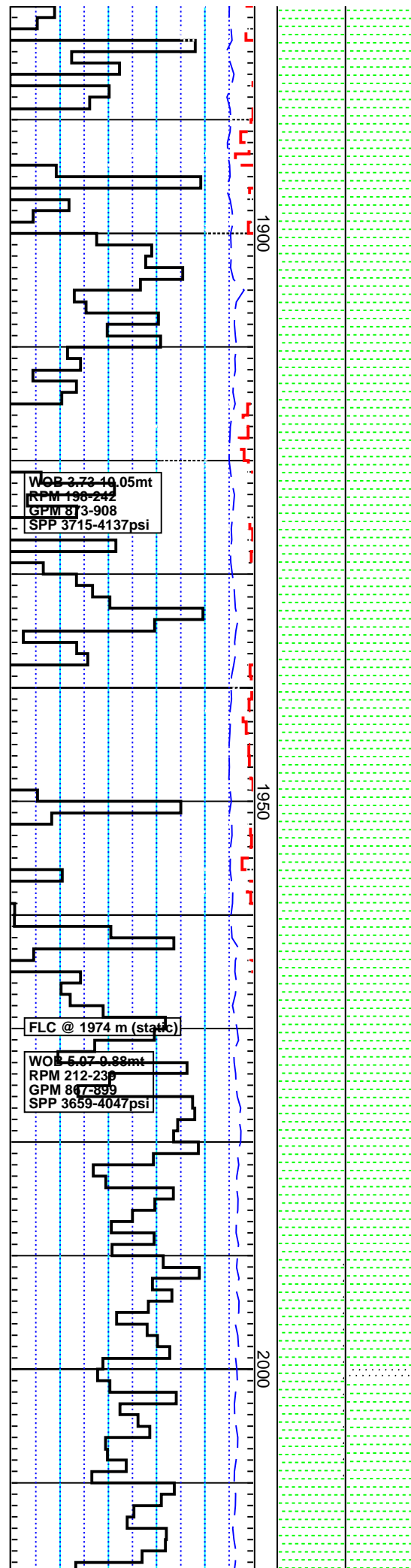
CLAYSTONE: m dk gy, olv gy, sft-disp, amor, stky i/p, tr carb spks & microlams, tr glauc, tr pyr nod, tr micmic

CLAYSTONE: m dk gy, olv gy-olv blk, disp-frm, amor-sbbiky, stky i/p, tr carb spks & microlams, tr glauc nod, tr pyr nod
SANDSTONE: clr-trns, occ brn stn, vf-f, qtz grns, lse, mod srt, p cmt, tr glauc nod, p inf por, no shw

CLAYSTONE: 1. m dk gy-m gy, olv blk, sft-frm, blk-y-sbbiky, tr vf qtz grns, tr carb spks & microlams, tr glauc nod
2. m lt gy, olv gy, sbbiky-amor, sft-disp, tr galuc, tr carb spks, tr micmic

CG @1846m 0.09 ABG

CG @1876m 0.10 ABG



CLAYSTONE: m dk gy-m gy,brnsh blk,
olv blk,sft-frm,blky-sbblky,tr vf qtz grns,
tr carb spks & microlams,tr glauc nod,
tr micmic

Carbide check @ 1904m
Theor stks = 9352
Actual stks = 9948
Avg hole size 12.81"

CLAYSTONE: m dk gy-m gy,brnsh blk,
olv blk,sft-frm,blky-sbblky,tr vf qtz grns,
tr carb spks,tr glauc nod,tr foss frags,
tr micmic

Survey @ 1963.05 m
Dev 1.36 deg
Azi 50.96 deg
TVD 1962.95 m

CLAYSTONE: olv gy,dk yelsh brn,
brnsh gy,sft,sbblky-amor,stky i/p,disp i/
p,tr vf qtz grns,tr carb spks,tr glauc
nod,tr micmic

CLAYSTONE: olv gy,grnsh gy,dk gy,
sft-frm,sbblky-amor,disp i/p,tr vf qtz
grns,tr carb spks,tr glauc nod,tr
micmic,tr dissem pyr & pyr nod

MW 1.26 sg V 57 PV/YP29/45
Gels 7/13 F 3.5 FC 1

WOB 6.25-10.07 m
RPM 202-234
GPM 825-902
SPP 3706-4025

FLC @ 2030.7 m (static)

2050

2100

2150

Sol 8.2 Sd 0.5 pH 10.5
Cl 62k Ca 80 KCl 9.0

CLAYSTONE:dsky brn,dskyyelsh brn,
brnsh blk,sft,sbblky-amor,non disp,
flocc,v sl calc,tr vf glauc nods,tr carb
spks,tr f dissem & nod pyr

CLAYSTONE:olv gy-dsky brn.sft-frm,
sbblky-amor,dom non calc,non disp,tr
micmic,tr vf glauc nods,rf dissem pyr,
tr carb spks

SILTSTONE:brnsh blk-olv blk,frm-
mod hd,sbblky-ang,non calc,non disp,
flocc,microxln,tr carb spks,tr vf glauc,
micmic,intbd w/ CLAYSTONE

CLAYSTONE:olv gy-dsky brn.sft-r frm,
sbblky-dom amor,dom non calc,non
disp,tr micmic,tr vf glauc nods,rf
dissem pyr,tr carb frags

SILTY CLAYSTONE:dk gy,sft,sbblky-
gen amor,non calc,non disp,flocc,tr vf
glauc,tr carb spks

Drill 12.25" hole to 2109mRT